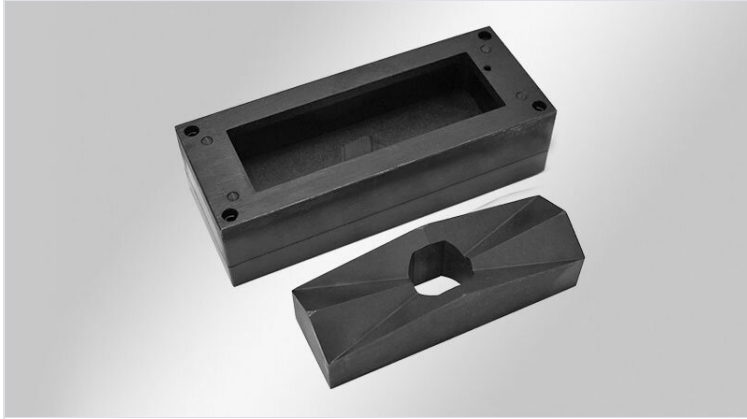


# Rectangular & square punches

sized for heavy multi-pin industrial connectors and icotek cable entry systems



Rectangular and square punches and dies make it easy to punch holes into stainless steel (V2A versions), mild steel, aluminium or plastics with a max. sheet thickness of 2 mm. Available for cut-outs sizes of 10-, 16-, and 24- multi-pin heavy industrial connectors and also for numerous special cut-outs. Therefore, the punches are suitable for most icotek cable entry systems. Centre punches are integrated in the die for exact drilling of mounting holes.

The punches are for hydraulic operation only.

## Scope of delivery:

- Punch, die and draw stud
- robust plastic storage case

**Note:** Punch 125 x 125 mm (order no. 80063) is only to be used with hydraulic foot pump (order no. 80002).

## Specifications

**Material** Steel, hardened and burnished

## Advantages & benefits

- Centre punches for exact drilling of mounting holes
- Robust plastic storage case
- Suitable for hand hydraulic punch driver by icotek and other manufacturers

## Product types & sizes

Part No.  
EAN  
Package quantity

### Punch 66x112



Part No.	<b>80061</b>	Max. wall	<b>2 mm</b>
EAN	<b>4251269318</b>	thickness	
	<b>757</b>		
Package quantity	<b>1</b>		
Suitable for cable entry systems:	<b>KEL 24-E</b>		
Number of centre punches	-		
Thread UNF	<b>19 mm</b>		
Punching material	<b>Plastic, Mild steel (St)</b>		

**Punch 125×125**



Part No. **80063**  
EAN **4251269322**  
**709**  
Package quantity **1**  
Number of centre punches -  
Thread UNF **19 mm**  
Punching material **Plastic, Mild steel (St)**  
Max. wall thickness **2 mm**

**Punch 68×68**



Part No. **80064**  
EAN  
Package quantity **1**  
Number of centre punches -  
Thread UNF **19 mm**  
Punching material **Plastic, Mild steel (St)**  
Max. wall thickness **2 mm**

**Punch 92x92**

Part No. **80060**  
EAN **4251269318**  
**252**  
Package quantity **1**  
Number of centre punches -  
Thread UNF **19 mm**  
Punching material **Plastic, Mild steel (St)**  
Max. wall thickness **2 mm**



**Punch 22x45**

Part No. **80059**  
EAN **4251269319**  
**174**  
Package quantity **1**  
Number of centre punches -  
Thread UNF **19 mm**  
Punching material **Plastic, Mild steel (St)**  
Max. wall thickness **2 mm**



